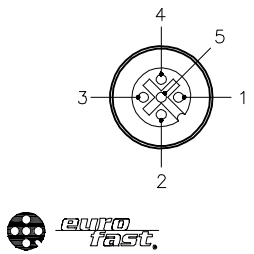
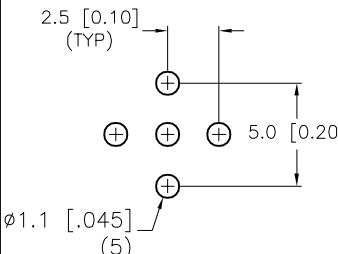
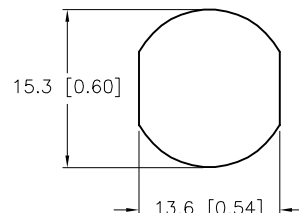
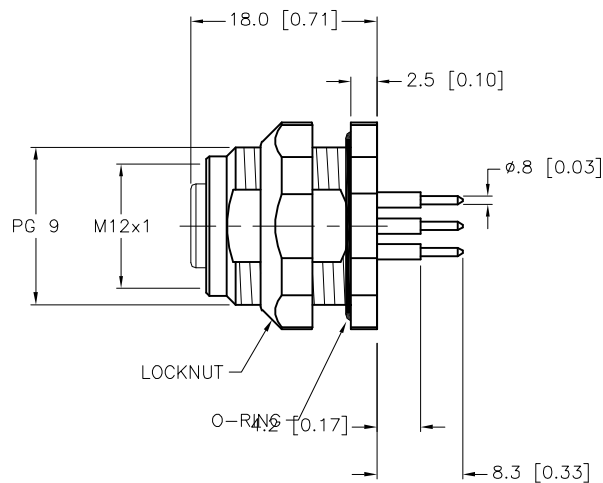
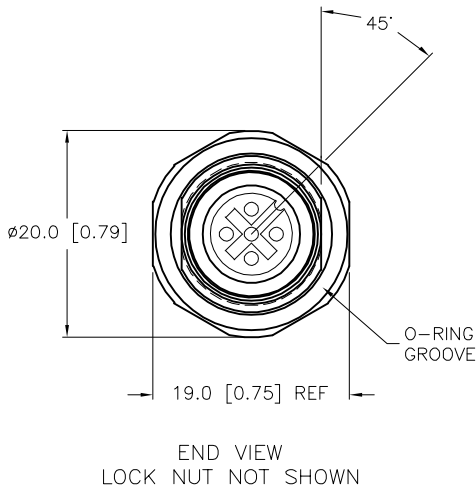
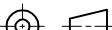



FEMALE END VIEW	BOARD LAYOUT	TYPICAL PANEL CUTOUT	SPECIFICATIONS	
			CONTACT CARRIER MATERIAL	NYLON OR TPU
			CONTACT MATERIAL/PLATING	BRASS/GOLD
			HOUSING, LOCKNUT MATERIAL/PLATING	STAINLESS STEEL/PASSIVATED
			O-RING MATERIAL	NITRILE
			RATED CURRENT [A]	4.0 A
			RATED VOLTAGE [V]	250 V
			NUMBER OF CONDUCTORS [AWG]	5 PRINTED CIRCUIT PINS
			TEMPERATURE RANGE	-40°C to +105°C (-40°F to +221°F)
			PROTECTION CLASS	MEETS NEMA 1,3,4,6P AND IEC IP68



SOURCE DRAWING - FOR REFERENCE ONLY

					RELATED DOCUMENTS		3RD ANGLE PROJECTION		THIS DRAWING IS CONFIDENTIAL AND THE PROPERTY OF TURCK INC. USE OF THIS DOCUMENT WITHOUT WRITTEN PERMISSION IS PROHIBITED.		3000 CAMPUS DRIVE MINNEAPOLIS, MN 55441 1-800-544-7769 (763) 553-7300 (763) 553-0708 fax www.turck.us						
					1.												
					2.												
					3.												
4.		MATERIAL		ALL DIMENSIONS DISPLAYED ON THIS DRAWING ARE FOR REFERENCE ONLY		DRFT RWC		DATE 08/15/08		DESCRIPTION FKFDKV 4.5							
SEE SPECIFICATIONS		APVD				SCALE 1=.8											
FINISH		SEE SPECIFICATIONS		CONTACT TURCK FOR MORE INFORMATION		UNIT OF MEASUREMENT MILLIMETER [INCH]				IDENTIFICATION NO. U2-14499		REV F					
F						NOTATE THE KEYWAY IS 45° FROM THE MOUNTING FLAT		RDS		04/25/22		77572					
REV		DESCRIPTION		BY		DATE		ECO NO.		DO NOT SCALE THIS DRAWING				FILE: U2-14499		SHEET 1 OF 1	